



32 Kenmore Way

, Carlisle, ML8 5RZ

Offers over £120,000

NEW TO THE MARKET!

A stunning and immaculate end terraced villa, upkept to the highest of standards throughout by the present owner and further enhanced by way of fresh décor and quality floor coverings. Early internal viewing is a must to appreciate the size and style of Home on offer here.

The accommodation comprises, on the ground floor, a welcoming reception hallway, large formal lounge, a fitted dining kitchen with integrated appliances of oven, hob and cooker hood and Dining Room with French Doors overlooking and offering access to the landscaped and enclosed rear garden.

On the Upper Level are three great sized bedrooms and a family bathroom which completes the accommodation.

The property sits in a good sized plot with lovely well maintained gardens to front and rear. The secure rear garden has been thoughtfully landscaped with double gates giving access to cars if required, flower beds and raised decked patio, ideal for relaxing and entertaining outside!

Further benefits include double glazing, gas central heating and paved parking outwith the rear gates.

Kenmore Way is situated in a residential estate, a few minutes from Carlisle Town Centre where all day-to-day

Viewing

Please contact our Pomphreys Properties Ltd Office on 01698373365 if you wish to arrange a viewing appointment for this property or require further information.

- Stunning, immaculate Family Home
- Dining Room with French Doors
- Lovely Landscaped Rear Garden
- Three Bedrooms
- Large Fitted Kitchen



3



1

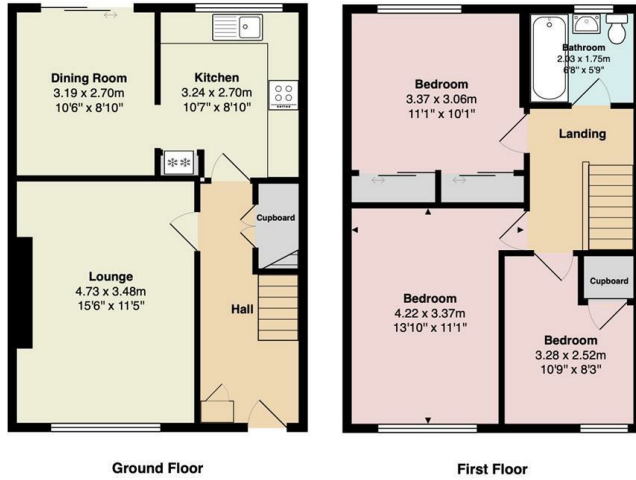


1



Floor Plan

32 Kenmore Way, Carlisle



Total Area: 88.9 m² ... 956 ft²

All measurements are approximate and for display purposes only



Area Map



Energy Efficiency Graph



These particulars, whilst believed to be accurate are set out as a general outline only for guidance and do not constitute any part of an offer or contract. Intending purchasers should not rely on them as statements of representation of fact, but must satisfy themselves by inspection or otherwise as to their accuracy. No person in this firm's employment has the authority to make or give any representation or warranty in respect of the property.